



hunterstoves
GROUP



ASPECT ECO MULTIFUEL STOVES & MULTIFUEL GRATE KITS

Instructions For Installation and Use

These instructions must be read in conjunction
with the installation and operating instructions
supplied with the stove.

ASPECT MULTIFUEL STOVES

The Parkray Aspect Multifuel stove will be delivered as illustrated.

Once installed, this stove can be used to burn different fuels, such as wood and smokeless fuel.

If you have chosen a multifuel version of the Aspect stoves, please follow the main instructions contained within the user manual for your stove when commissioning the stove, using it for the first time and beyond.

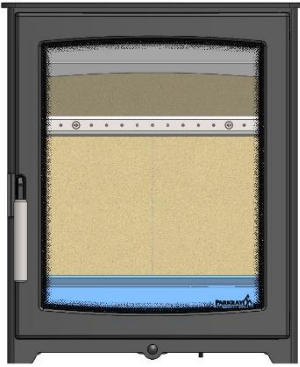
This multifuel version of the Aspect stove is setup with the multifuel grate and ashpan.

Please see the instructions for burning fuel further down.

For full information on suitable and approved fuels, please refer to the Hetas website: <https://www.hetas.co.uk/consumer/fuel-schemes/>



OPTIONAL INSTALLATION OF GRATE KIT FOR STANDARD ASPECT STOVES



If you choose to adapt and upgrade your standard Aspect stove to use with multiple fuels by purchasing an Aspect Grate Kit, follow the below instructions for installation and use.

Remove the existing Fuel Retainer and Base Bricks.

If your appliance is fitted on a Superimposed Hearth, it is recommended that you keep the Base Bricks in place.

FITTING THE GRATE KIT

ASPECT 4 / 4 COMPACT – ASPECT 5 / 5 COMPACT - ASPECT 6 – ASPECT 8

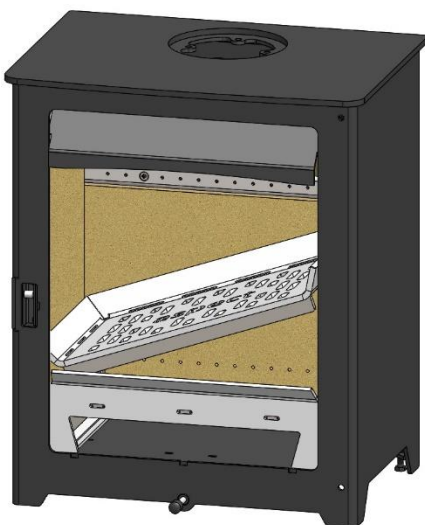


Place the Grate Supports on either side of the Appliance so that they are touching both the Side and Rear Bricks.

Insert the Fuel Retainer in front of the Side Supports.



Tilt Grate to 45° and Insert into the Appliance. Lower the Grate onto the supports being careful not to trap your fingers between the Grate and Side Bricks.



Slide the Ashpan into the gap below the Grate.



PLEASE DO NOT EMPTY THE ASHPAN WHILE HOT, WAIT FOR THE STOVE TO COOL DOWN AND THEN EMPTY.

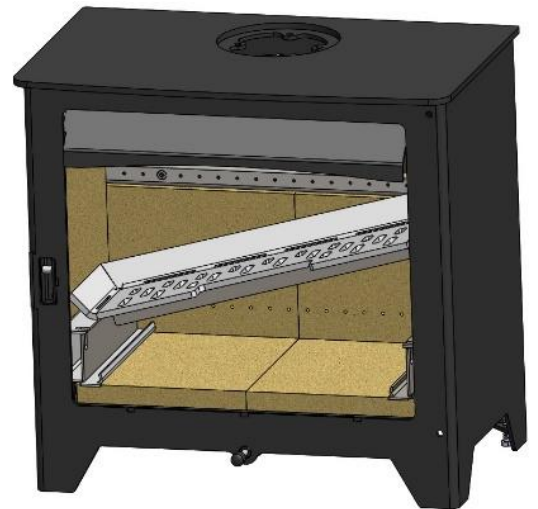
FITTING THE GRATE KIT

ASPECT 7 – ASPECT 14

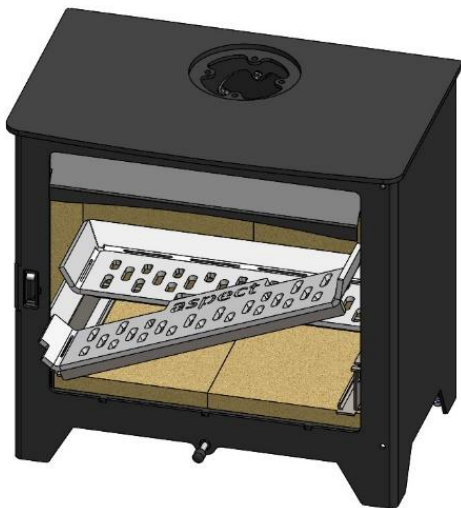
Place the Grate Supports on either side of the Appliance so that they are touching both the Side and Rear Bricks.



Tilt Rear Grate to 45° and Insert into the Appliance. Lower the Grate onto the supports and push to Rear Brick, being careful not to trap your fingers between the Grate and Side Bricks.



Tilt Front Grate to 45° and Insert into the Appliance. Lower the Grate, in front of the Rear Grate.



Tilt the Ash Retainer and drop onto the Front Grate.



Slide the Ashpan into the gap below the Grate.

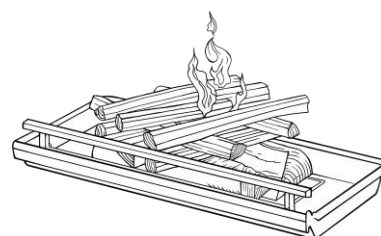
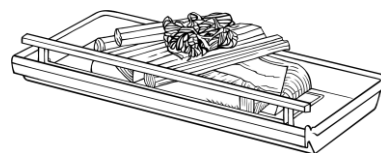
Note,
The Aspect 14 has 2 Ashpans.



INSTRUCTIONS FOR USE

Lighting The Stove with wood

- 1) Ensure all air controls are in the fully open position.
- 2) In the base of the stove, place the larger split and dry logs (amount dependent upon size of the firebox). Ensure a gap is left between the logs as this allows air movement to help the fire breathe when lit.
- 3) Place approximately six to eight pieces of kindling (finely chopped wood) on top of the logs in the opposite direction to the split logs.
- 4) Put 2 to 4 Eco fire lighters on top of the kindling in the centre.
- 5) Finally, place 2 to 4 pieces of kindling on top of the Eco fire lighters.
- 6) Close the door as soon as flames appear.
- 7) A small amount of soot may appear on the glass during the lighting. This is perfectly normal and will go after a period of time.
- 8) Extra logs should not be added until there is a bed of glowing embers.



Kindling:

Length - 15cm to 20cm

Diameter - 2cm to 5cm

Approximately 8-12 finely chopped pieces

Adding Wood

- Firstly, ensure that the wood you are using has a moisture content of less than 20% (We recommend 12-15% to ensure an efficient burn).
- When refuelling open all the air controls fully and the damper (if fitted).
- Open the door slowly by releasing the handle and allowing to stay like this for 10 to 20 seconds. As opening the door too fast can cause smoke to be drawn into the room as the firebox has not had time for the pressure to equalise. The smoke will then take the easiest route which is out, through the opening.
- Fully open the door slowly and carefully place the fuel.
- It is recommended to use 2 pieces of wood weighing 1.2 to 1.4kg in total. 25cm long. Only refuel when flames die down.
- Put the logs diagonally to each other so that they can catch fire easily.
- Close the door. (All our stoves are tested as closed-door appliances and should be used as such.)
- Keep the air control in the fully open position until the logs catch fire.
- This can then be reduced to aid slower combustion.



Lighting The Stove with Solid Fuel

- Ensure all air controls are in the fully open position.
- In the base of the stove, on top of the grate, place the alternative Hetas approved fuel, and follow the relevant instructions provided by the fuel supplier.
- Close the door when flames appear.
- Some soot may appear on the glass during lighting. This is normal and will go after a period of time.



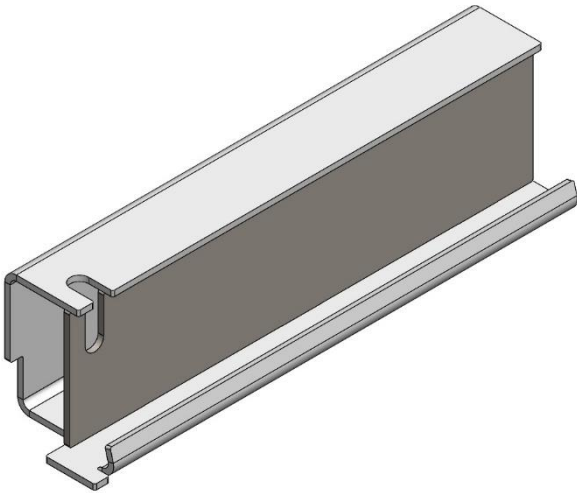
Adding fuel

- Firstly, ensure that the fuel you are using is Hetas recommended.
- Only refuel when flames die down to avoid burns/accidental damage.
- When refuelling open all the air controls fully and the damper (if fitted).
- Open the door slowly by releasing the handle and allowing to stay like this for 10 to 20 seconds. As opening the door too fast can cause smoke to be drawn into the room as the firebox has not had time for the pressure to equalise. In this instance, if the door is opened too quickly, the smoke will naturally take the easiest route which will be out through the door opening.
- Fully open the door slowly and carefully place the fuel.
- Close the door. (All our stoves are designed to be closed-door appliances and should be used as such.)
- Keep the air control in the fully open position for the fuel to catch fire.

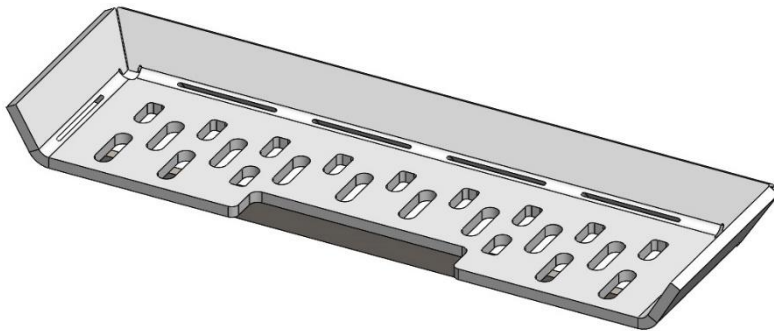
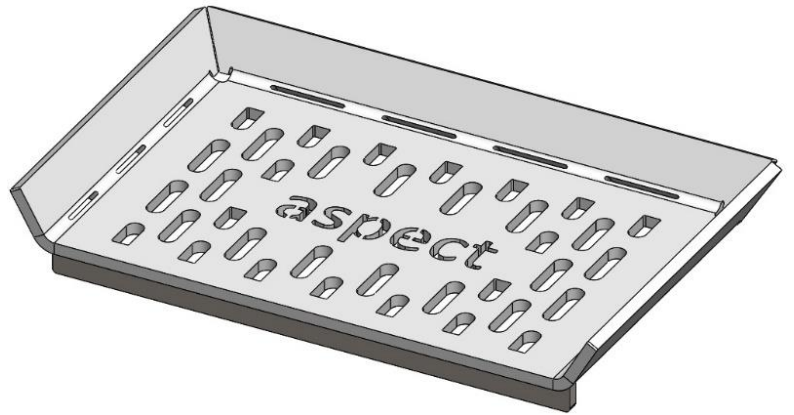
SPARES

Multifuel / Grate & Ashpan Kit spares are available as shown below, please contact the sales team.

Grate Side Support

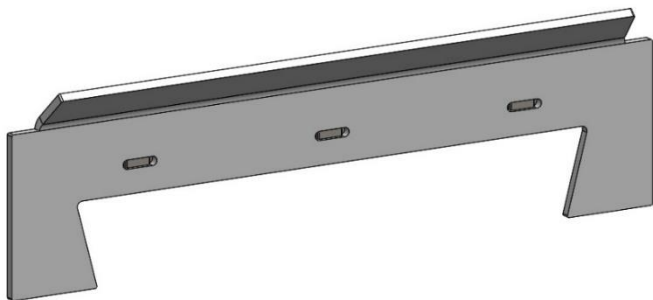


Full Static Grate

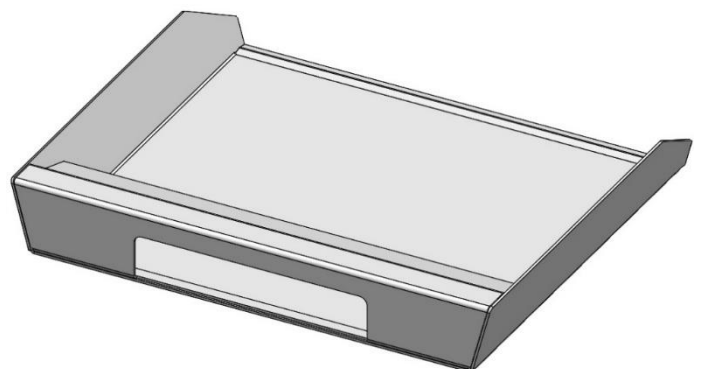


Rear Static Grate

Front Static Grate



Fuel Retainer



Ashpan



hunterstoves
GROUP